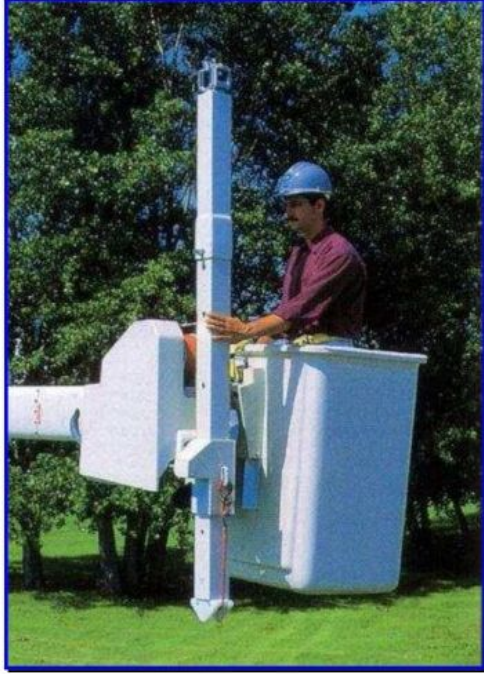


## RANGER A – 125J



FULLY HYDRAULIC, ROBUST  
&  
SAFE OPERATION

**NEW!**

The new Translink **RANGER A-125J Materials Handler** is an Aerial Work Platform designed in compliance with British Standard BS EN280. The winch assembly complies with US Standards ASME – B30.7 1989 as well as SAE J706a and SAE J881.

The **RANGER A-125J** is complete interlocked for maximum safety

### Cage

Manufactured from Glass Reinforced Plastic insulated against accidental contact up to a test voltage of 3,000v.

The cage is fitted as standard with one Operator Harness anchor points.

The cage automatically maintains its horizontal operating position using a mechanical levelling system.

### Winch & Jib

Mechanical Jib in cage and Electric Winch with capacity of 100kg

### Controls

Fully hydraulic boom controls. Standard single controls in cage – optional dual controls at base.

### Stabilisers

Full hydraulic 'A' frame stabilisers fitted with foot plates to reduce ground pressures. The stabiliser cylinders are fully protected against external damage, by being contained within rectangular hollow tubes. Interlock valves are fitted as standard.

### Booms

The Articulated booms are designed to provide maximum strength with minimum weight. All boom cylinders are fitted with lock valves as standard to prevent descent in the unlikely event of hose failure, making them "Fail Safe".

The booms are interlocked with the stabilisers to prevent elevation until the stabilisers are deployed

### Subframe

The **RANGER A-125** has a substantial subframe designed to take all the loadings imposed by the operation of the booms and transmit them directly to the stabilisers.

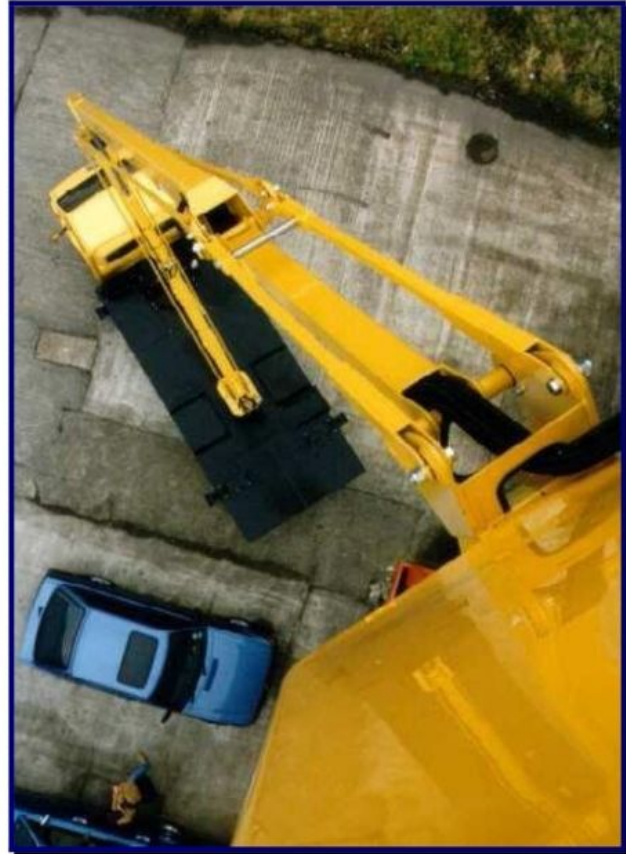
### Power Supply

The Hydraulic pump is driven directly from the Vehicle engine via a power take off (PTO)

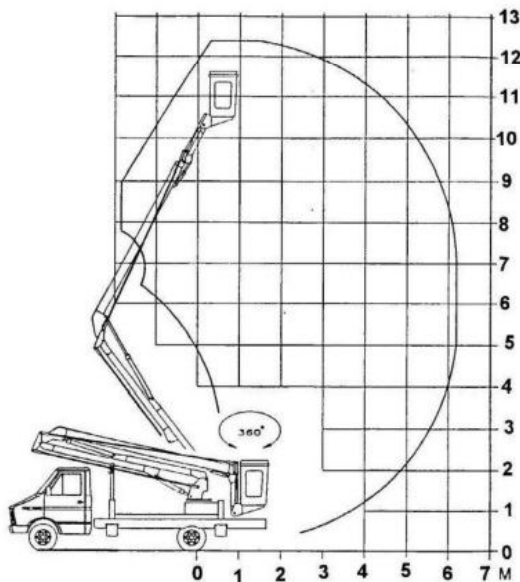
# RANGER A – 125J



Mechanical Materials Handling Jib and Winch with 100kg Capacity  
Single man cage with optional 20KV insulation shroud to Cage Boom



View from the cage showing the third boom and dual levelling arms



## **Specifications RANGER A-125J**

Max. Working Height	12.50m
Max. Cage floor height	10.50m
Max. Out Reach	6.20m
Max. Safe working JIB	100Kg
Cage Safe Load	90Kg
Cage size	0.66x0.66x1.1m
Cage material	GRP
Rotation (continuous)	360°
Insulation	2kV
Boom Shroud Insulation	20kV (optional)
Chassis Requirement	
GVW (Minimum)	3,500Kg
Wheel base (Minimum)	3,500mm

**FULL RANGE OF OPTIONS AVAILABLE**

**TRANSLINK International Sales Ltd.,**

The Pigpen, Mill Farm, Farlow, Kidderminster, Worcestershire, DY14 0LP. UK

Tel : +44 (0)1746 718 740 Fax : +44 (0) 1746 718 540

E-mail: [translink-international@dial.pipex.com](mailto:translink-international@dial.pipex.com)

[www.translink-international.com](http://www.translink-international.com)